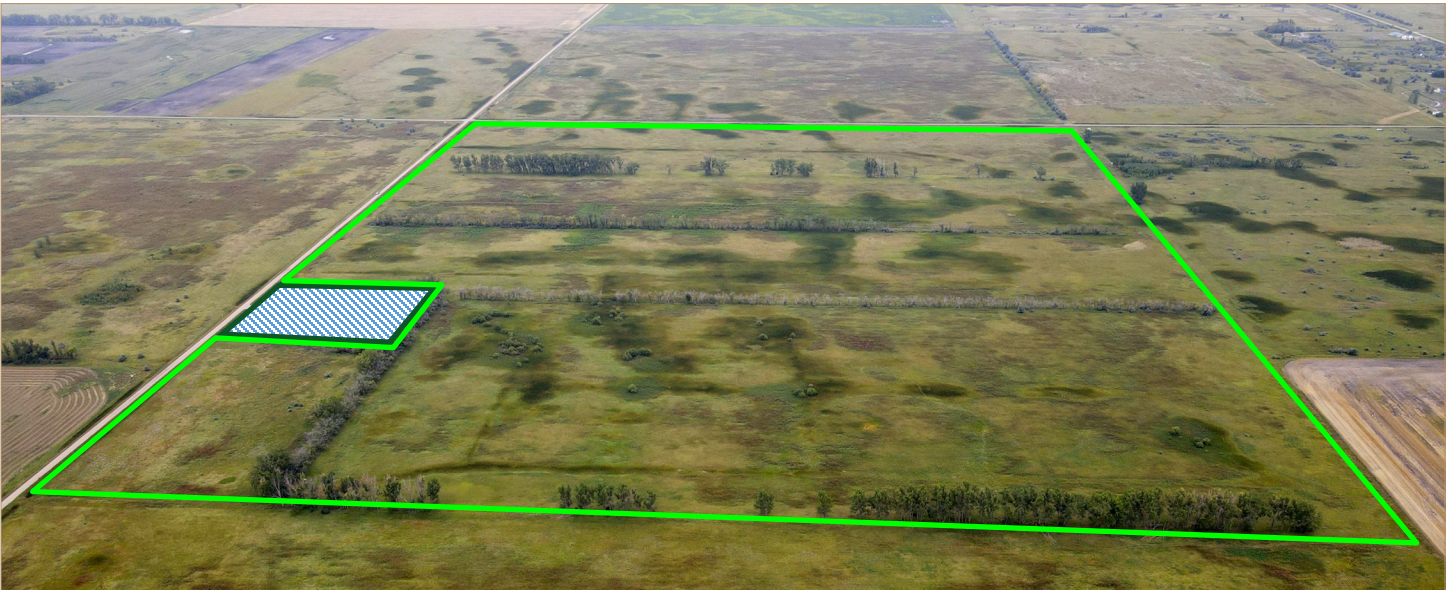


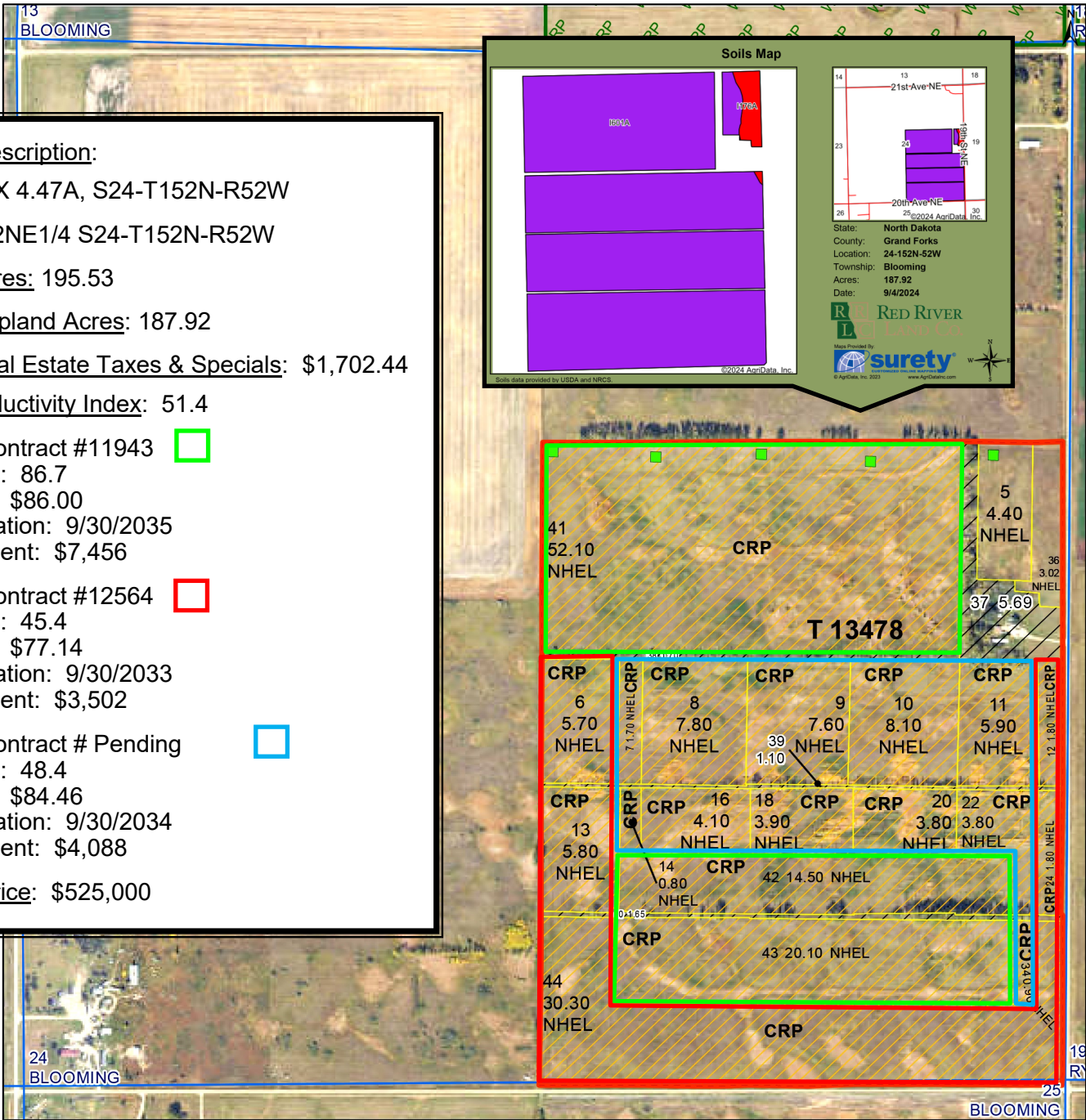
CRP Land for Sale

Blooming Township

Grand Forks County, North Dakota



A Total of 195.53 Acres with 180.5 Acres Enrolled in CRP
Includes 9.24 Acres of Potential Development Land
Located 3 Miles NW of Grand Forks International Airport
Listed Price: \$525,000



Legal Description:
 SE1/4 EX 4.47A, S24-T152N-R52W
 S1/2S1/2NE1/4 S24-T152N-R52W

Total Acres: 195.53

FSA Cropland Acres: 187.92

2023 Real Estate Taxes & Specials: \$1,702.44

Soil Productivity Index: 51.4

CRP: Contract #11943
 Acres: 86.7
 Rate: \$86.00
 Expiration: 9/30/2035
 Payment: \$7,456

CRP: Contract #12564
 Acres: 45.4
 Rate: \$77.14
 Expiration: 9/30/2033
 Payment: \$3,502

CRP: Contract # Pending
 Acres: 48.4
 Rate: \$84.46
 Expiration: 9/30/2034
 Payment: \$4,088

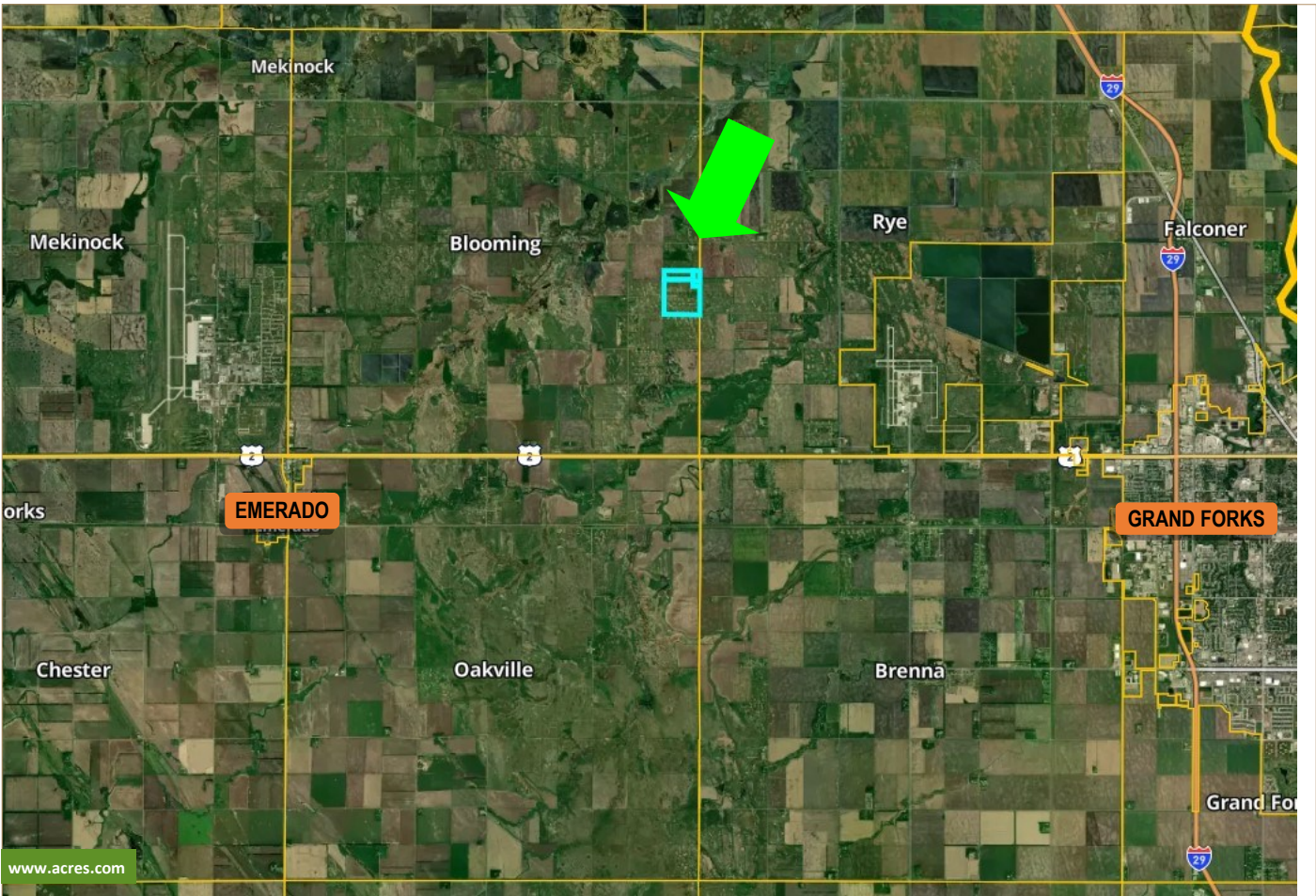
Listed Price: \$525,000

Area Symbol: ND035, Soil Area Version: 27						
Code	Soil Description	Acres	Percent of field	PI Legend	Non-Irr Class *c	Productivity Index
I601A	Bearden silty clay loam, moderately saline, 0 to 2 percent slopes	183.43	97.6%		IIIs	52
I176A	Ojata silty clay loam, 0 to 1 percent slopes	4.49	2.4%		VIIs	25
Weighted Average					3.07	51.4

*c: Using Capabilities Class Dominant Condition Aggregation Method



LOCATION MAP



3100 S Columbia Rd, Suite 300
Grand Forks, ND 58201



Chris Griffin

Cell: 218-779-1064
chris@redriverlandco.com

John Botsford

Cell: 701-213-6691
john@redriverlandco.com

Nick Skjerven

Cell: 218-791-5002
nick@redriverlandco.com

Real Estate Sales • Beet Stock Sales • Farm Management

NOTE: Red River Land Company assembles information from sources considered reliable but does not guarantee accuracy. Each prospective buyer should conduct their own due diligence concerning the property.

www.redriverlandco.com | Office: 701-757-1888 | Fax: 701-566-8760